

Product parameters

Product name: floor-standing humidifier
 Model: DEM-LD220
 Rated power: 25W Capacity: 4.0L
 Rated voltage/frequency: 220-240V-50/60Hz
 Overall dimension: 170*170*540mm
 Package contents: a humidifier, the Instruction Manual (with the product certificate) and a remote control

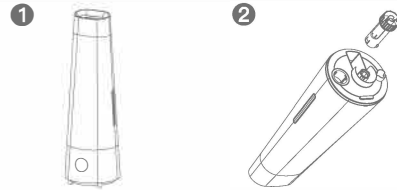
Operating principle

The Deerma humidifier atomizes water into ultrafine particles (1 μ m-5 μ m) according to the principle that ultrasonic wave generates 1.7 million times of high-frequency vibration per second and diffuses the water mist into air through its pneumatic device, so as to humidify air evenly. The humidifier can maintain ideal room humidity and prevent static electricity.

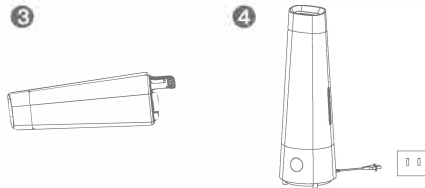
Cleaning and maintenance

1. Clean the water basin and water tank of the humidifier periodically to obtain best performance.
2. Regularly clean the transducer and filter to prevent dirt accumulation; otherwise, long-term accumulated dirt will be hard to clean off.
3. Please turn off the power and pull off the power plug before cleaning. Please hold the power plug to pull it off rather than forcefully pull the power lead.
4. Do not use any chemicals, gasoline, polishing powder or other similar substances to clean the humidifier surface. Do not use any detergent to clean the appliance. Clean water is the best choice for cleaning.
5. Please use soft cloth for regular component cleaning. If any limescale cannot be cleaned off from the water basin by using routine cleaning methods, please use the detergent manufactured or supervised by Deerma. Melt citric acid with hot (60°C) water (water: citric acid=10ml: 1g), pour the solution to the location with the scale, leave the scale in the solution for 5 minutes, and then gently scrub the scaled surface with brush until the scale is cleaned off.
6. Please replace the water in the water basin and water tank frequently to maintain the humidifier clean.
7. If the appliance will not be used for a long time, please clean all its components, wipe them dry, and then place them in original packing box or dry places.

Operation instructions



1. Remove the water tank from the main body.
2. Rotate the water valve to remove it, place the water tank vertically, align the water inlet to the faucet, turn on the faucet valve to fill the water tank with water, and then tighten the water valve.



3. Or, rotate and loosen the water valve, pull the loosened water valve out to a proper position, place the water tank horizontally, align the water inlet that is at the side of the water valve to the faucet, turn on the faucet valve to fill the water tank with water, and then tighten the water valve. (This method can be adopted when the water tank cannot be placed vertically under the faucet due to the limited facet height.)
4. Place the water tank filled with water back to the main body, and socket the power cord plug. Gently press the "Power" button to power on the appliance and "Mist" button to regulate mist output.

Functions



After powering on, the appliance will beep once and be ready for use. The standby indicator ⏻ will be on.

"POWER" button: press it to power on the appliance, and the appliance will beep once. Then, the default maximum output of the mist comes from the appliance (with all the 4 stripes indicating mist output are lightened on the display panel), and the current humidity is indicated in the numerical area on the panel. Press the button again to power off the

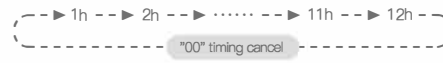
appliance, and then the display panel will be off (the standby indicator ⏻ will be still on).

Note: press the "Power" button on the powered-on appliance for 3 seconds to turn off the display panel; then, press any button on the appliance to turn on the display panel again.

"MIST" button: press it to adjust mist output. There are three modes, i.e. high (03-maximum output), medium (02-moderate output) and low (01-minimum output), as shown in the following figure. After selecting the output mode, the corresponding number of indicating stripes on the display panel will be lightened (1 lightened stripe for the low mode, 2 stripes for the medium and all the 4 for the high). The numerical area on the display panel indicates the current humidity.

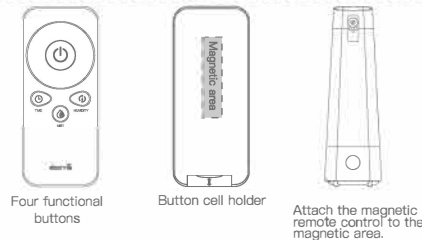


"TIME" button: the timing function is preset to be deactivated after the appliance startup. In normal operation, gently press the button to activate the timing function. Continue to press the button to set the time (available setting choices are shown in the following figure). After time selecting, the indicator of the corresponding area on the display panel will flash for 3 seconds, and the humidifier will be in timing operation. The timing indicator ⏻ will be on, and the numerical area on the display panel will indicate the current humidity. After timing setting, the appliance will be in the standby status. If you need to cancel timing setting, you can press the "Time" button, and set the timing value to "00". After 3 seconds' flashing, the timing indicator ⏻ will be off, and then timing function is deactivated.



Note: after activating the function of automatic humidity control, the default mist output will be in the "High" mode until the humidity reaches the set value, and then the appliance will be on standby again. When detects that the humidity falls lower than the set value, the appliance will humidify air again.

Anti-dry protection: when the water tank is dry, the appliance will keep beeping for several times (three short beeps at a time), and the red dryness-warning indicator will be flashing on the display panel. The display panel will be kept on. After filling water into the water tank, the indicator will be off, and the appliance will be back in normal operation.



Note: the setting methods of all the above corresponding buttons on both the remote control and the appliance are the same; pull off the power cord plug from the socket when the appliance is not in operation.

Troubleshooting

Indicators are off, with no indication or mist.

Cause: the power is not on, or there is any problem of the power supply.

Solution:

Power on again. If the appliance still cannot operate normally, please contact the Deerma customer service center in time.

There is no mist after powering on.

Cause: water filling for the water tank is required, and the anti-dry protection function of the humidifier is activated.

Solution:

Fill the water tank with water, and then restart the humidifier. If the appliance still cannot operate normally, please contact the Deerma customer service center in time.

Mist amount is improperly small.

Cause: there is a great amount of limescale on the sprayer plate or foreign matter in water.

Solution:

Clean the sprayer plate; replace the water in the appliance with clean water.

There is abnormal noise.

Cause: the water level in the water tank is too low, or the placement surface is not even.

Solution:

Fill the water basin with water, and place the humidifier on flat, solid surface.

Caution: if the problem still cannot be solved by following above solution suggestion, please contact the maintenance center or dealer of Deerma. Non-professional personnel are forbidden to dismantle the humidifier.

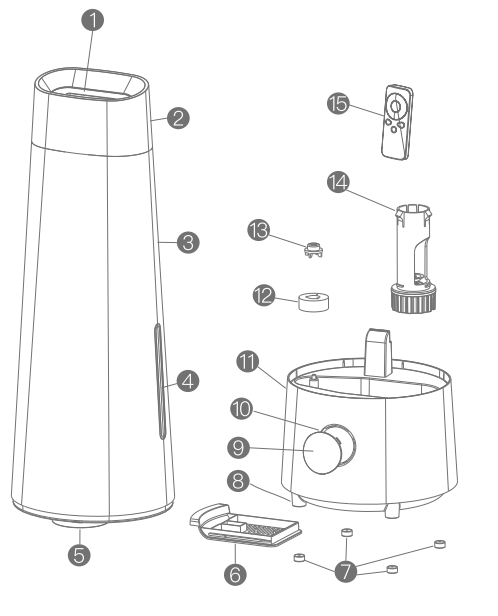
Tips

For operation: before filling water into the water tank, take off the nozzle cap, turn over the water tank, take off the water tank cap to fill water (or fill water through the side water inlet), tighten the water tank cap and then install the water tank back to the base. Then the humidifier is ready for normal operation.

For water accumulation in the base: an ultrasonic atomizing transducer is adopted in the humidifier to generate vibration, scattering aqueous water into water mist. The water tank is just an interim water storage container. As water basins at all humidifiers' bottoms will accumulate water, there is no need to worry about it.

For mist output adjustment: the amount of the mist from the humidifier can be adjusted. During operation, if there is any water around the humidifier, the indoor humidity of the room is excessively high, and, correspondingly, the mist amount shall be decreased properly.

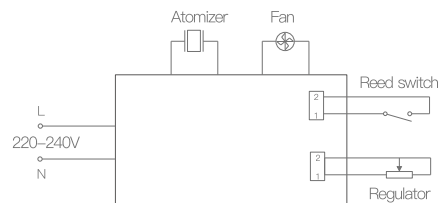
Product structure



- | | | |
|----------------------|---------------------|-----------------------|
| ① Mist outlet | ② Top shield | ③ Water tank |
| ④ Water level window | ⑤ Water tank bottom | ⑥ Air inlet slide |
| ⑦ Rubber feet | ⑧ Base plate | ⑨ Display panel cover |
| ⑩ Display panel | ⑪ Base | ⑫ Floater |
| ⑬ Floater gland | ⑭ Water valve | ⑮ Remote control |

Wiring diagram

The following diagram is for reference only and subject to any further update without notice. Refer to products if there is any discrepancy. Deerma reserves the right of final interpretation for the content herein.

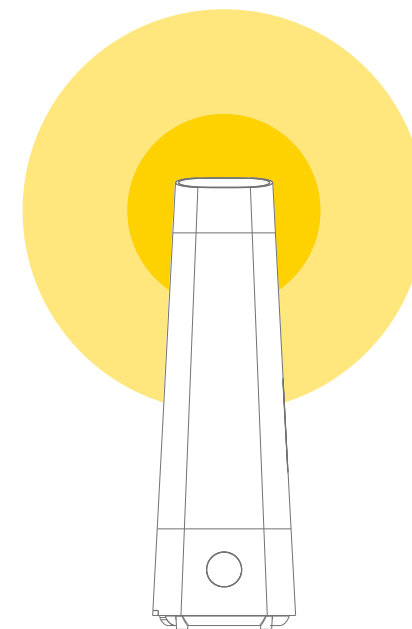


Safety precautions

1. Thank you for purchasing the Deerma Humidifier. Please read this Instruction Manual carefully before use.
2. Please ensure the adopted voltage and frequency conform to the specified voltage and frequency, i.e. 220V and 50Hz, of the appliance.
3. Do not dismantle, repair or modify the appliance arbitrarily.
4. Any damaged power cord must be replaced by the manufacturer or its maintenance department or other similar professional maintenance departments or personnel to prevent danger.
5. In case of any abnormality, please pull off the power plug immediately, and the appliance must be maintained by the manufacturer or its maintenance department or other similar professional personnel.
6. Clean off the dust on the power plug regularly.
7. Please turn off the power and pull off the power plug before cleaning or moving the appliance.
8. Please hold the power plug to pull it off rather than forcefully pull the power lead.
9. Do not move or overturn the appliance when it is powered on or in any circumstance with water.
10. Do not touch the water and components in the water basin when the appliance is powered on.
11. During operation, do not cover the air inlet or mist outlet with towels or other articles.
12. The appliance is not designed or manufactured for playing. Please keep it away from infants and children to prevent accidents. Do not place it in any baby bed, baby carriage or game playpen. Do not allow any infant or child to play with or use the appliance.
13. Do not use the appliance on any tilted bench. Put it at flat, solid places.
14. Do not add any essence or any similar substance that is not manufactured or supervised by Deerma into the water basin or water tank of the appliance.
15. Do not use it in kitchens. Please put it away from heat sources. Prevent direct exposure under sunshine. Keep it at least 2 meters away from other furniture or any other appliance to prevent the furniture or other appliances against damp.
16. Please pull off the power plug before filling water.

Precautions

- 1) The adopted power voltage must conform to the rated voltage of the humidifier. Otherwise, do not use the humidifier, and contact the dealer;
- 2) After receiving the humidifier, please place it in the room temperature for 30 minutes before using to prevent any water tank damage caused by sudden temperature changes;
- 3) Please use the humidifier in normal room temperature (5°C-40°C);
- 4) Place the humidifier on flat places and prevent it from tilting;
- 5) Please do not place the humidifier on any bare wooden floor directly; otherwise the wooden floor may be deformed and damaged due to moisture;
- 6) Place and use the humidifier at least 2 meters away from any furniture or any other appliance; otherwise the furniture or appliance may be dampened;
- 7) Please put it away from heat sources. Prevent direct exposure under sunshine;
- 8) Never fill the water tank and water basin with hot (higher than 40°C) water; otherwise, the humidifier will be damaged;
- 9) Never allow any water to flow from the air outlet into the main body; if there is any water on the main body, use dry cloth to wipe off the water to prevent any corresponding damage;
- 10) If the room temperature is lower than 0°C, pour off the water in the water tank and water basin; otherwise, the humidifier will be damaged by water freezing;
- 11) Do not place any metal, chemicals or detergent into the water basin; otherwise, atomization will be poor;
- 12) Power off the humidifier and pull the power plug off the power socket before pouring the water off the water basin;
- 13) If any movement, cleaning or water filling of the humidifier is required, power must be cut off, and the power plug must be pulled off the power socket; do not move it randomly during operation;
- 14) Never fill water through the mist outlet and air outlet;
- 15) During cleaning, prevent any water entering the appliance;
- 16) Do not dismantle original components arbitrarily.



Deerma Humidifier

Keep your life clean and refreshing all the time.

With its micron mist and simply operation so that to deeply moist your skin and each corner in your house. You can enjoy each wonderful moment when you use it.

Instruction Manual for
DEM-LD220 Floor-standing Humidifier

DEM-LD220