

Note:
This manual is carefully checked, in case there is any printing errors or misunderstandings on the content, the company reserves the power of interpretation.

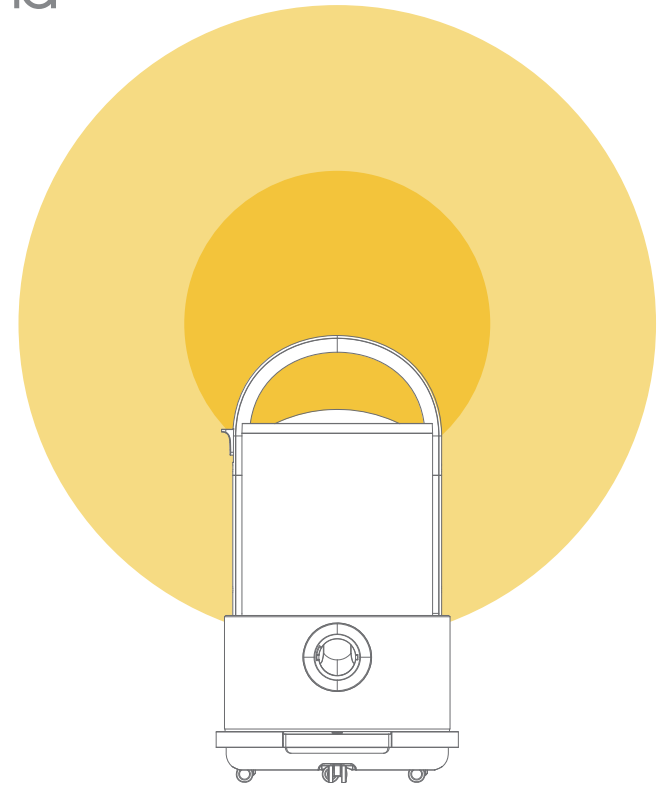
If there is any change in product function, appearance or color, without prior notice, product appearance depends on goods.

deerma

Foshan Shunde Deerma Electric Appliances Co., Ltd.

Add: No.4-1 Longhui Road, Malong Village Committee, Beijiao, Shunde, Foshan, Guangdong, China

deerma



Deerma Vacuum Cleaner

Continuous large suction can take away the dust

It is great at picking up fine dust rapidly and flexibly for each corner.
It is effective storing the dust not backflow to give you a clean living area.

TJ200W

Thank you for purchasing this product, Please read the instruction carefully before using, to ensure safety.
Deerma product will bring you and your family's life more fun and delicacy!

Company Profile

Deerma Appliances is an electric equipment appliance manufacturing company subordinated under Foshan Flying Fish E-Commerce Co., Ltd. and it's a joint venture company invested by several brand companies in the Pearl River Delta. It uses online channels as the core, to provide online users throughout the country with fashionable, creative and high cost-efficient household appliances.

Deerma brand's nature is user's yearning to quality life. Our main sales channel is online channel, and our products are mainly small home appliances, including humidifier, air purifier, vacuum cleaner, dryer, ironing machine, electric oven, etc. In the near future, we will develop more categories of products. Deerma appliances have been sold well all over the country, and the sales area covers more than 10 countries and regions in the world. It makes more families to enjoy life more simple.

Not only does the product have concise and fashionable design and excellent quality, but also Deerma more strictly controls the production, sales, after-sales and other links, and pursues environmental protection and product quality, to provide all families with high quality and healthy electric appliances.

With the concept of "pragmatic win-win, good faith cooperation", we will strengthen strategic cooperation with partners and integrate advantage resources, to create a national leading artistic electric appliance brand.



Cleaning and Maintenance

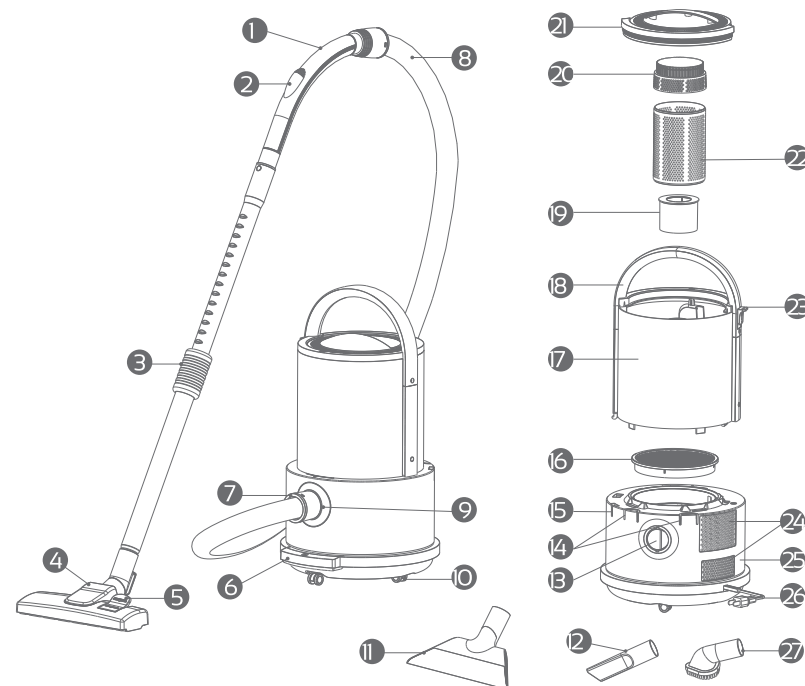
1. Clean the appliance with dry cloths instead of chemical solvents, such as gasoline, alcohol and lacquer thinner; otherwise, shell cracks or color fading may be caused;
2. Turn off the appliance before cleaning and maintenance;
3. Clean off the wastes accumulating in the dust cup in time to ensure smooth air flow and prevent blockage-caused reduced suction or heated motor;
4. Replace the filter element once every 3 months. For frequent use, the replacement cycle can be shortened as actually required.

Safety precautions

1. Read all contents in this Instruction Manual carefully before use, and assemble the appliance by following the steps in this Instruction Manual;
2. Product damages or personal injuries may be caused by the operations that do not conform to this Instruction Manual;
3. Make sure your applied power supply is consistent with the rated power (220-240V~ 50-60Hz) on the name plate of the vacuum cleaner before powering on.
4. This product is for indoor (household, hotels, schools, etc.) use only, and never use it for cleaning industrial wastes and heavy-metal dust;
5. In order to ensure operation safety, unless under proper supervision and guidance, this product cannot be used by the persons with physical, sensor or intellectual disabilities or any person lacking experience or knowledge (including children);
6. Never use this product under any circumstance with hidden dangers, e.g. gas stations, oil depots and chemical factories and other places with flammable and explosive materials;
7. Never use this product to clean the pigment or toner in any laser printer or photocopier to prevent; otherwise, the printer or photocopier may be damaged or in danger;
8. Never put this product in or approach to any high-temperature place, e.g. any stove or fireplace; otherwise, the product shell will be deformed and damaged;
9. Never use the product to suck any high-temperature substance (e.g. burning carbon), hazardous substance (e.g. sulfuric acid, corrosive and aggressive agent), ultra-fine matter (e.g. lime, cement and carbon powder) or flammable chemicals (e.g. gasoline, kerosene, diesel oil, paint and alcohol);
10. During operation, if there is any abnormal sound or abnormally high temperature of air outlet, stop operation immediately, and contact the customer service personnel;
11. If there is any power cord damage or machine fault, never repair by yourself; please stop operation immediately, and contact the customer service personnel for help;
12. Any damaged power cord must be replaced by the professional personnel from the manufacturer, the corresponding maintenance department or the similar departments to prevent danger.

Product components

Product components and assembly



Check whether there is any missing or damaged component after unpacking; if any, immediately contact the customer service personnel. The components contained in the package are:

- | | | | | |
|-------------------------|---------------------|------------------------------|---|--------------------------------------|
| ① Handle | ② Adjustable damper | ③ Metal extension tube | ④ Two-in-one ground brush | ⑤ Function switchover (floor/carpet) |
| ⑥ Foot pedal | ⑦ Hose connector | ⑧ Hose | ⑨ Suction seat | ⑩ Caster |
| ⑪ Wet ground brush | ⑫ Crevice tool | ⑬ Blowing port | ⑭ Hooks for crevice tool/triangle brush | ⑮ Hook for ground brush |
| ⑯ HEPA filter | ⑰ Dust bin | ⑱ Dust bin handle | ⑲ Floater | ⑳ Cyclone tower |
| ㉑ Upper lid of dust bin | ㉒ Cyclone cover | ㉓ Release button of dust bin | ㉔ Air outlet | ㉕ Main body seat |
| ㉖ Power cord | ㉗ Triangle brush | | | |

Note: refer to the components of purchased products if there is any discrepancy between the above listed components and the actual product components.

Technical parameters

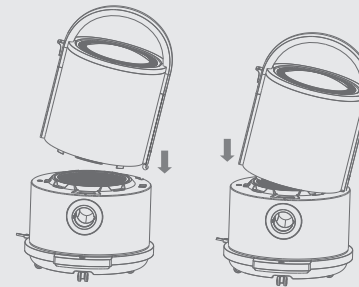
Product parameters and features

a. Product parameters

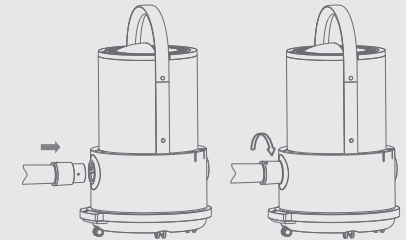
Product name	Vacuum cleaner (wet/dry vacuum cleaner)	Model	TJ200W
Rated voltage	220-240V~	Rated power	800W
Rated frequency	50-60Hz	Overall size	306*290*536mm
Dust bin capacity	6L(capacity for water: 3.5L)	Waterproof grade	IPX4
Weight	5.07kg	Vacuum degree	16kPa
Noise level	≤86dB(A)		

Operation instruction

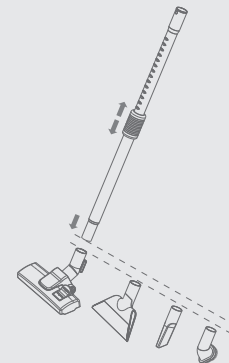
I. Slightly tilt the dust bin, align the right buckle joint to the bottom buckle slot to install the dust bin into the main body seat; then gently buckle the left buckle joint to the seat; a sound of "snap" indicates the complete installation. Gently lift the cleaner to ensure the dust bin is properly locked to the main body.



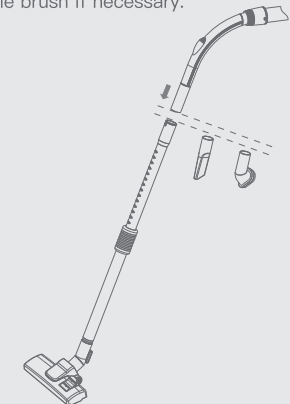
II. Align the hose connector to the suction seat slot to install the hose to the main body; after connected, gently rotate the connector counterclockwise, and a sound of "snap" indicates that the hose connector has been locked to the main body.



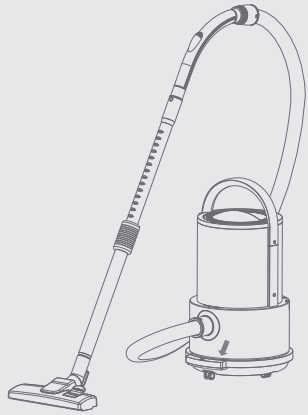
III. Stretch the aluminium extension tube to the proper length as per the actual needs; insert the smaller tube end to the ground brush connector, and gently push the end to ensure firm locking. Use the tube in coordination with the wet brush, crevice tool and triangle brush if necessary.



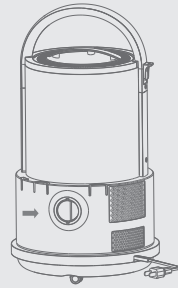
IV. Insert the handle to the larger tube end, and gently push the end to ensure firm locking. Use the tube in coordination with the crevice tool and triangle brush if necessary.



V. Insert the power cord plug to the power socket, and stamp the foot pedal to start the vacuum cleaner.



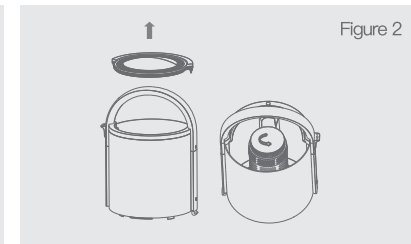
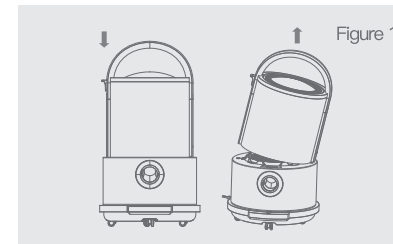
VI. A normally-closed blowing port is provided at the rear of the main body seat. If there is any need of air blowing, insert the hose connector to the port and rotate the connector clockwise to lock the hose connector to the port. Then, air will blow strongly from the hose handle connector. The blowing port is normally closed and is only opened when the hose connector is inserted.



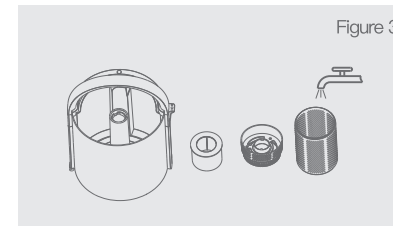
Cleaning and maintenance

Cleaning of dust bin

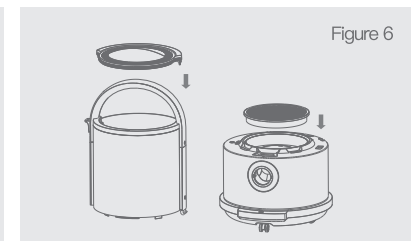
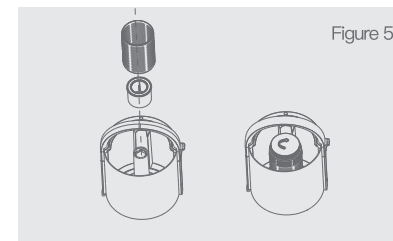
1. Press the release push button of the dust bin, and simultaneously lift the dust bin slightly to detach the dust bin from the main body.
2. If it is required to remove the upper lid of the dust bin, hold the handle with one hand, and underprop the dust bin bottom with the other hand. Empty the waste from the dust bin into the trash can, and then rotate the cyclone column counterclockwise to remove it.



3. Clean the cyclone column, cyclone cover, floater and dust bin with water.
4. The dust attached to the HEPA filter can be directly flushed away with water. Cleaning frequency is dependent in the actual use. It is suggested to gently pat the HEPA filter after each time of use to prevent dust accumulation and ensure effects. The washed filter must be installed back to the main body after completely dried.



5. Assemble the floater and cyclone cover back to the dust bin (the floater must be installed along the direction indicated by the arrow mark). Align the cyclone column to the slot at the inner pillar of the dust bin, and rotate the column clockwise to lock it properly.
6. Install the upper lid and HEPA filter (the HEPA filter must be completely dried) back to the dust bin and main body seat respectively. Continue using the cleaner after installing the dust bin back to the main body seat.



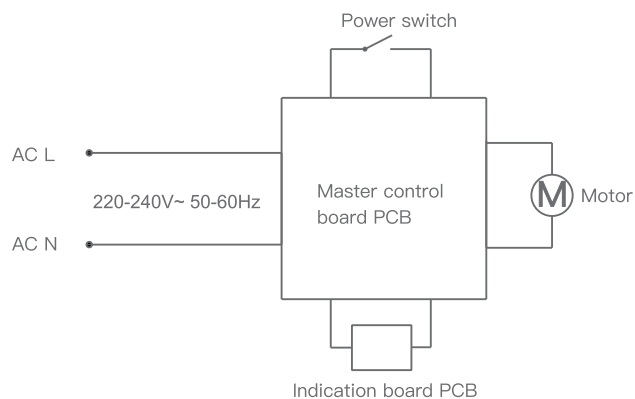
- Note: 1. The floater must be installed along the direction indicated by the arrow mark on it; otherwise, the safety water stop valve will be damaged;
 2. As the floater shall float up and down in the dust bin, after the correct installation of the cyclone column, there will be sound caused by the active floater if the dust bin is shaken, which is normal;

Storage and maintenance

1. Cut off power before any cleaning and maintenance;
2. Put the cleaner in cool, dry places for long-time storage; never expose it under direct sunshine or wet environment;
3. Do not place heavy obstacles on the cleaner; otherwise, it will be damaged;
4. In case of any fault (especially any motor fault), please contact us in time. Never dismantle and repair the cleaner by yourself.
5. Wring out the cleaning cloth before using it to clean the main body; the dust bin can be flush directly with water and then wiped dry with cleaning cloth or dried naturally. Do not use chemical solvents, e.g. gasoline, alcohol or lacquer thinner, for cleaning; otherwise, the crack or colour fading of the shell will be caused;
6. Please empty the dust bin in time if there are many wastes in it to ensure a smooth air route and prevent the weaker suction or motor heating caused by blockage;
7. In order to ensure cleaning effects and prolong the service life of the motor, please clean the dust bin and HEPA filter in time; replace the damaged HEPA filter, if any, in time;
8. In order to ensure the smooth steering of the main body, the casters shall be cleaned after use to ensure there is no hair or foreign matter that is blocking the casters and affecting the steering;
9. The HEPA filter can be flushed directly with water and shall be installed back to the main body when it is completely dried (prevent direct exposure under strong sunshine) for use to ensure suction effects and smooth use;
10. The wet brush and ground brushes may be attached by hair or large foreign matters after use. Please clean them in time to ensure proper suction effect.

Wiring diagram

The following diagram is for reference only and subject to any further update without notice. Refer to products if there is any discrepancy. Deerma reserves the right of final interpretation for the content herein.



Troubleshooting

Problem	Cause	Solution
Vacuum cleaner is not working.	<ol style="list-style-type: none"> 1. The power cord plug is not inserted in place; 2. The power socket is out of power; 3. The power switch is not on. 	<ol style="list-style-type: none"> 1. Insert the power cord plug properly; 2. Check the power socket can supply power normally; 3. Turn on the power switch.
Suction is weaker.	<ol style="list-style-type: none"> 1. The dust bin/HEPA filter is not installed properly; 2. The HEPA filter is blocked by any foreign matter; 3. The HEPA filter is not completely dried after washing; 4. The ground brush or hose is blocked by any foreign matter; 5. The maximum water level is reached, which starts the water stop valve device. 	<ol style="list-style-type: none"> 1. Install the dust bin/HEPA filter properly according to the Instruction Manual; 2. Clean the HEPA filter; 3. Put the HEPA filter in cool, dry places and dry it completely; 4. Clean off the foreign matters on the ground brush or hose; 5. Empty the waste water in the dust bin in time.