

Note
This manual is carefully checked, in case there is any printing errors or misunderstandings on the content, the company reserves the power of interpretation.

If there is any change in product function, appearance or color, without prior notice, product appearance depends on goods.

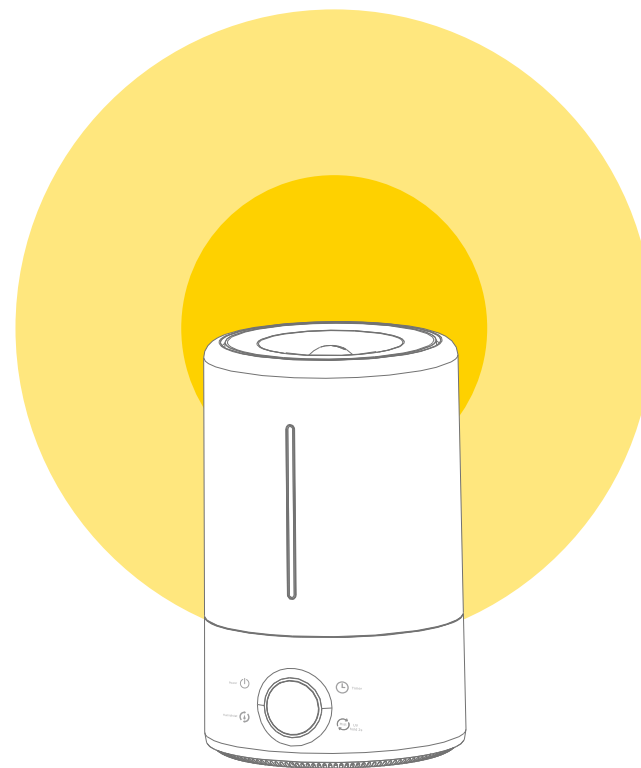
deerma

Guangdong Deerma Technology Co., Ltd.

No.4-1 Longhui Road, Malong Village Committee, Beijiao Town, Shunde District, Foshan City, Guangdong Province, China

Made in China

deerma



Deerma Humidifier

Keep your life clean and refreshing all the time.

With its micron mist and simply operation so that to deeply moist your skin and each corner in your house. You can enjoy each wonderful moment when you use it.

Instruction Manual for Humidifier

DEM-F628S

Thank you for purchasing this product. Please read the instruction carefully before using, to ensure safety. Deerma product will bring you and your family's life more fun and delicacy!

In addition, this instruction can be available on the following website: <http://www.deerma.com>

Safety Instruction

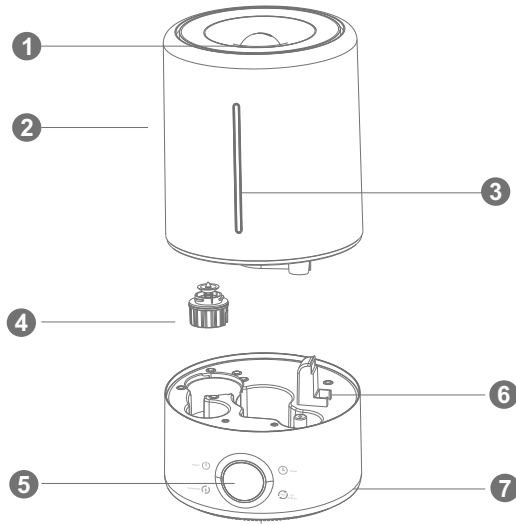
1. Please do not unplug with wet hands to avoid electric shock;
2. Please do not dismantle, repair or modify the product without authorization;
3. When the machine is turned on, do not touch the atomizer plate with hands. Otherwise you will burn yourself;
4. The power cord shall not be scratched, damaged, knotted, or shall not be pressed with weight or clamped or processed. Otherwise it may cause electric shock, short circuit or fire;
5. Please do not replace the power line. In case of any abnormality, please immediately unplug;
6. If the power cord is damaged, it must be replaced by the manufacturer;
7. Please do not separate the water tank and base and do not touch the water and parts in the base during the operation;
8. The machine is used internally only;
9. Please pull out the power plug in the thunderstorm weather or if it is not used for a long term;
10. Please do not overturn the machine when it is powered on and there is water in it, to avoid burning the internal electronic components;
11. To be used by only competent adults;
12. Do not run cord under carpeting. Do not cover with throw rugs, runners, or similar coverings. Do not route cord under furniture or appliances; Arrange cord away from traffic area and where it will not be tripped over.
13. Be aware that high humidity levels may encourage the growth of biological organisms in the environment.
14. "Do not permit the area around the humidifier to become damp or wet. If dampness occurs, turn the output of the humidifier down. If the humidifier output volume cannot be turned down, use the humidifier intermittently. Do not allow absorbent materials, such as carpeting, curtains, drapes, or tablecloths, to become damp."
15. Unplug the appliance during filling and cleaning.
16. Never leave water in the reservoir when the appliance is not in use.
17. Empty and clean the humidifier before storage. Clean the humidifier before next use.
18. **Warning:**
Micro-organisms that may be present in the water or in the environment where the appliance is used or stored, can grow in the water reservoir and be blown in the air causing very serious health risks when the water is not renewed and the tank is not.
19. Cleaned properly every 3 days.
20. Keep the appliance out of the reach of children. Steam and boiling water may cause burns.
21. Empty the tank and refill every third day. Before refilling, clean it with fresh tap water or cleaning.

Precautions

1. This product is only to be used on 220–240V~50–60Hz electrical systems;
2. Please firstly place the humidifier at ambient temperature for 30 minutes and then use it after receiving the humidifier, to avoid damage of water tank caused by sudden change of temperature;
3. Please use the humidifier at normal ambient temperature;
4. This unit must be run on a level surface;
5. This unit is not designed for wood floors and can cause water damage to the wood;
6. Please place the humidifier away from the furniture and home appliances for more than 2 meters for use to avoid damage to items;
7. Please place the humidifier far away from heat and sunlight;
8. Do not fill with water over 104F(40°C) to the water tank and water slot to avoid damage of machine;
9. Do not allow water into the air outlet. In case of water in the machine body, please make sure to dry and clean to avoid damage to the machine.
10. Do not allow the unit to freeze to avoid damage;
11. Do not add anything other than water to this unit. Otherwise, the atomization will be poor;
12. Turn off and unplug the unit before removing water from the unit;
13. Do not move the unit during operation. The unit must be turned off and unplugged first;
14. Do not allow water to get into the mist or air outlets;
15. While cleaning keep water out of the internal machine;
16. This unit is not designed to be disassembled by anyone other than the manufacturer. This will void warranty;
17. If water gets into the machine body please wipe clean immediately.
18. Do not put essential oil into the water tank, because adding essential oils to your cool mist humidifier could cause the tank to crack and the humidifier to malfunction.

Product Structure Diagram

a. Product parts schematic and assembly



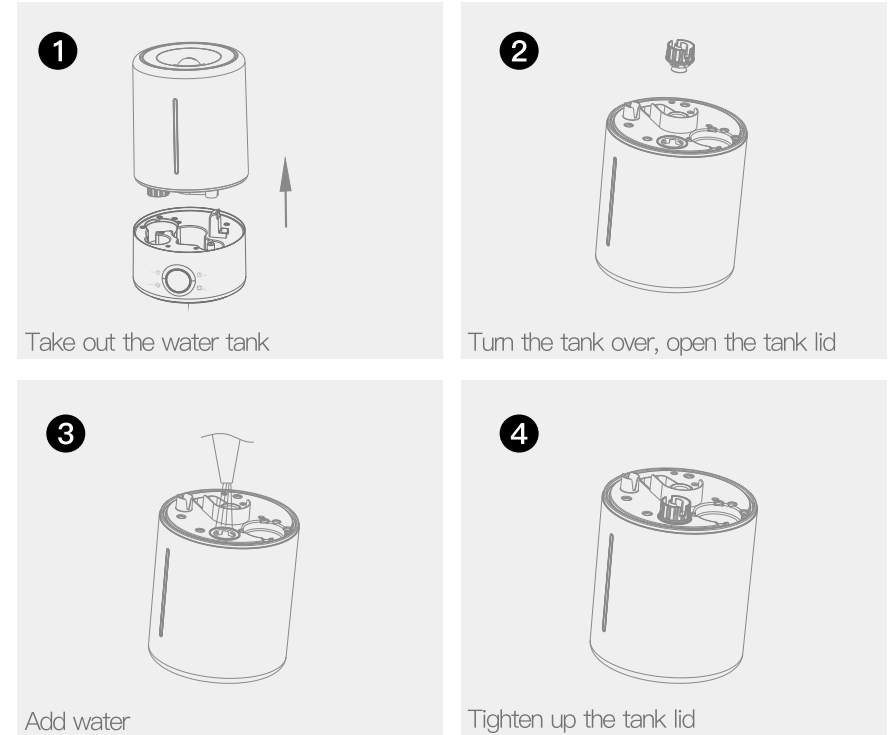
- 1 Nozzle 2 Water tank 3 Water window 4 Water valve
- 5 Display screen 6 Essential oil box 7 Engine base

Remarks: The above product accessory configuration may be different from the actual purchase. The configuration in the actual purchase shall prevail.

b. Product parameters and characteristics

Product name	Humidifier
Product Model	DEM-F628S
Rated Voltage	220-240V~
Rated Frequency	50-60Hz
Rated Power	25W
Capacity	5L
Complete Machine Dimension	187*200*295mm

Product Usage



1. Put the humidifier on the level surface, take down the water tank, turn it over and unscrew the tank lid at the bottom of tank;
2. Inject appropriate clean tap water;
3. Screw up the tank lid;
4. Stably place the water tank on the engine base, plug into the socket. Please ensure the working voltage consistent with the service voltage before powering on.

Operating instructions:

Plug in, machine sounds "DI" and be in standby state, operating follow below instructions:

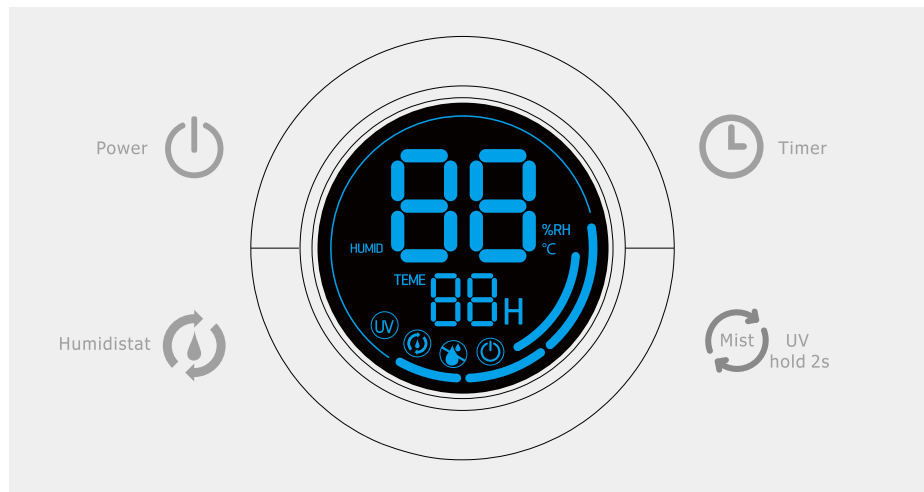
1. Power: Touch "Power" button, machine sounds "DI" and ready to work with default low mist volume. Screen automatically displays current humidity and temperature alternately. Long press three seconds to turn off the machine

2. Timer: 12 hours timer, every touch adds one hour, timing cancelled on the thirteenth touch. Timer index light flick three times once setting done and screen displays the timing hours and index. Long press three seconds to turn off the display screen, and touch every function to turn on the display screen.

3. Mist/UV: First touch to switch from low to medium; Second touch to switch to high mist volume. Indicator light on after each mode selection. Screen automatically displays current humidity and temperature alternately after power on; followed by recycling. Long press for 3s to start UV function, UV indicator light on. Touch again to stop this function and indicator light off.

4. Humidistat: First touch with default 45% humidity, every touch again adds 5% Humidity till 90% and then one more press to cancel this function. Indicator flashes 2 times after selecting the desired humidity and enter constant humidity mode and humidistat index light on. Mist will stop once humidity reach to the setting humidity, and restart when lower than the setting humidity

5. Water storage protection: Machine sound "Di" three times when water shortage, indicator red light hits, screen light flashes up (displays current humidity and temperature). Add enough water; water storage indicator light off and machine recover the normal working.



Cleaning and Maintenance

- Regularly clean the water tank, water slot and atomizer plate. Be sure to power off and unplug the unit before cleaning.
- It is suggested to clean once in every 5 days.
- External cleaning of humidifier: Wipe up the external surface with soft and clean wet cloth under 104 40 .
- DO NOT use the hard object for cleaning to avoid damage of parts.
- DO NOT clean with chemical detergent.
- Often replace the dated water in the water tank and maintain the humidifier inside cleaning.
- Keep the internal humidifier dry for long-term nonuse.

Fault Analysis and Troubleshooting

Light is not lit without air and mist?

Cause analysis:

1. The power line plug is not connected;
2. The power line is dama
3. If the current set humidity is lower than the ambient humidity, the humidifier does not mist;
4. If the humidity has reached the set value, the humidifier does not mist.

Handling method:

1. Check the power plug and connect it;
2. Adjust the humidity to a higher value until mist on.
3. Contact the seller by support@proaller.net

The power indicator light is lit without air and with air or no air is blown out of the air outlet?

Cause analysis:

1. No water in the water tank;
2. Atomizer is damaged or fan is damaged;

Handling method:

1. Add water to the water tank
2. Contact the seller by support@proaller.net.

The sprayed mist is smelly

Cause analysis:

It is new product and the water in the water tank is not clean

Handling method:

Wash the water tank or replace the water

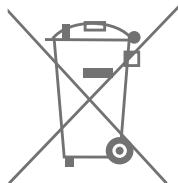
Less mist volume

Cause analysis:

Too much scale on the atomizer plate or too much impurities in the water

Handling method:

Clean the atomizer plate and replace with clean water



The appliance must not be disposed of with regular household waste. At the end of its service life, the appliance must be properly delivered to a collection point for the recycling of electrical and electronic equipment. By Collection and recycling of old appliances, you are making an important contribution to the conservation of our natural resources and provide for environmentally sound and healthy disposal.



 **ESSENTIAL OIL WARNING**

- Fill only a few drops
Essential oil to aroma tray,
avoid spillover, or will hurt
the machine
- Clean aroma tray before
using different essential
oil, in order to have the
best performance

