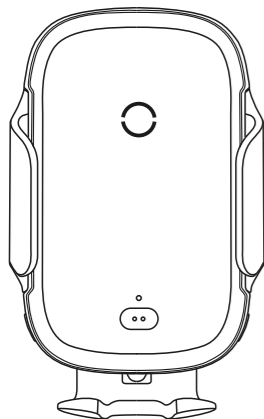


# Baseus



## Baseus Light Electric Holder Wireless Charger Operation Manual

### Statement

Thank you very much for choosing this product! Please read the user manual carefully before using this product. All information in this manual may be changed without notice. The company reserves the right to change the information at any time without additional information.

### Product Introduction

Thank you for choosing our product. This is an infrared sensing car holder wireless charger. Please read this manual carefully before using this product and keep it properly for future reference.

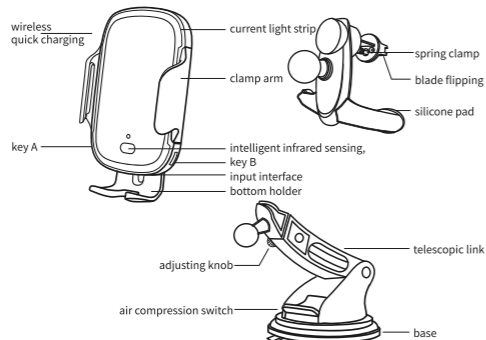
### Product List

Wireless holder ×1  
Suction cup holder ×1  
Air outlet clamp ×1  
Charging cable ×1

### Product Features

- ① Equipped with Air Outlet and Instrument
- ② 15W High Power, Wireless Quick Charging
- ③ Ambient Light, Charging Indication
- ④ Infrared Induction, Automatic Locking
- ⑤ Stable Clamping with Metal Clamp Arm
- ⑥ Conveniently Operated with One Hand

### Product Appearance



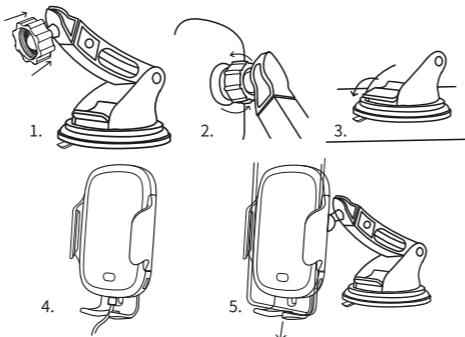
### Product Parameters

Model: WXHW03  
 Material: ABS+Acrylic  
 Technology: Oxidation  
 Colour: Black  
 Input: 5V/2A, 9V/2A, 12V/1.67A (Max.)  
 Output: 5W, 7.5W, 10W, 15W (Max.)  
 Installation method: Clamping + suction-cup  
 Fixation position: Air outlet + instrument panel + windshield  
 Suitable for: Mobile phones with wireless charging function (4.5-6.5 inch)  
 Size: Principal Part: 72\*62\*112mm  
 Air Outlet Clamping Holder: 90\*81\*68mm  
 Suction-cup Base: 64\*115\*61mm

### Installation Steps

#### Suction-cup type

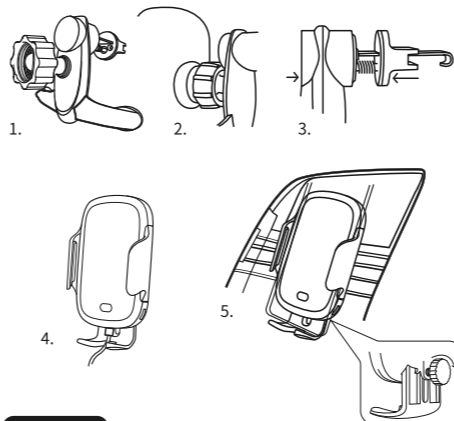
1. Set the knob on the ball head
2. Insert the ball into the rear of the wireless holder and tighten it
3. Clean the instrument panel, firmly attach the suction cup to it, and press the air compression switch
4. Connect the power cord
5. Place the mobile phone in, extend out of the bottom holder, and adjust the charging position (bottom holder adjuster).



### Installation Steps

#### Air outlet type

1. Set the knob on the ball head
2. Insert the ball into the rear of the wireless holder and tighten it
3. Press the air outlet base spring to fix the air outlet base into the air outlet blades.
4. Connect the power cord
5. Place the mobile phone in, extend out of the bottom holder, and adjust the charging position (bottom holder adjuster).



### Instructions

#### Current light

1. Blue/cyan halo: status of power connection and power supply
2. Surrounding green: standby mode
3. Green light cycle on both sides: working state
4. Flicking of whole circle of red: status of foreign body detection

### Keys

Click A or B, or click both A and B at the same time (open/close clamping arms)  
Long press the A key (turn off or turn on the light strip)

### Open/close control/induction mode:

The clamp arms on both sides open automatically when the holder powers on (the bracket is open by default).

The holder is closed (the clamp arms are retracted) when the holder senses a phone is on it. Click the button to open the clamp arms and remove the phone

Notes: When the holder is closed, the clamp arm will not stretch by IR sensing function but by pressing the button.

### Important Notice

1. When using this product, please use an adapter with output of 5V/2A, 9V/2A, 12V/1.67A or with quick charging function.
2. No metal objects, such as iron sheets, rings and metal protective coverings, can be placed on the contact surface during charging.
3. If the mobile phone is found to have the problems of intermittent charging or serious heat generation, it is most likely that the receiving coil of the mobile phone is not completely aligned with the wireless charging coil. Please try to cool the mobile phone and then align the position correctly.
4. This product has the function of input overcurrent and overvoltage protection. The improper use will shut down or reduce the output power. Please check whether the device is abnormal or improperly used.
5. Keep the operating ambient temperature at 0-25°C, do not place the product in water and fire, and the environments with too high (> 40°C) and too low (< -20°C) temperature, and keep the fittings from reach of children.
6. Please use dry soft cloth to clean the surface, and do not clean with chemicals, soap or detergent.
7. Incorrect use or improper placement of the product by the user may lead to a reduction in the service life of the product or damage to the product. The consequence thus incurred is not within the scope of warranty or at the manufacturer's responsibility. We hope you can kindly understand.
8. iP cannot have quick charging under the following conditions
  - a) iP battery level is more than 60%
  - b) iOS version is below 11.1.2
  - c) if the temperature of the mobile phone is higher than 35-40°C, the iP cannot enter quick charging and the speed will become slower. Please charge in an environment with appropriate temperature.

It is hereby declared that WXHW03 a product model of Shenzhen Times Innovation Technology Co., Ltd., complies with the provisions of Directive 2014/30/EU and Directive 2011/65/EU. The full text of the EC Declaration of Conformity can be found on the following website: [www.baseus.com](http://www.baseus.com)

This equipment complies with the provisions of Directive 2012/19/EU. It is strictly forbidden to dispose of this equipment with ordinary trash; it must be recycled. This symbol indicates that the product shall not be treated as regular domestic trash, and must be delivered to a recycling center that is capable of recycling electronic and electrical equipment.

This device complies with part 15 of the FCC Rules. Operation is subject to the following two conditions: (1) this device may not cause harmful interference, and (2) this device must accept any interference received, including interference that may cause undesired operation.

Any changes or modifications not expressly approved by the party responsible for compliance could void the user's authority to operate the equipment.

NOTE: This equipment has been tested and found to comply with the limits for a Class B digital device, pursuant to Part 15 of the FCC Rules. These limits are designed to provide reasonable protection against harmful interference in a residential installation. This equipment generates, uses and can radiate radio frequency energy and, if not installed and used in accordance with the instructions, may cause harmful interference to radio communications. However, there is no guarantee that interference will not occur in a particular installation.

If this equipment does cause harmful interference to radio or television reception, which can be determined by turning the equipment off and on, the user is encouraged to try to correct the interference by one or more of the following measures:

- Reorient or relocate the receiving antenna.
- Increase the separation between the equipment and receiver.
- Connect the equipment into an outlet on a circuit different from that to which the receiver is connected.
- Consult the dealer or an experienced radio/TV technician for help.



Manufacturer: Shenzhen Times Innovation Technology Co., Ltd.  
 Add: 5th Floor, Building B, Baseus Intelligence Park, No.2008, Xuegang Rd, Gangtou Community, Bantian Street, Longgang District, Shenzhen  
 Executive Standard: Q/SSCZ 012-2020  
 Hotline: +86-4000-712-711 Website: [www.baseus.com](http://www.baseus.com)

PB2150Z-P0A1

倍思设计/Designed by Baseus  
中国制造/Made in China