

DARKAIR

INSTALLATION GUIDE

BIOS Configuration

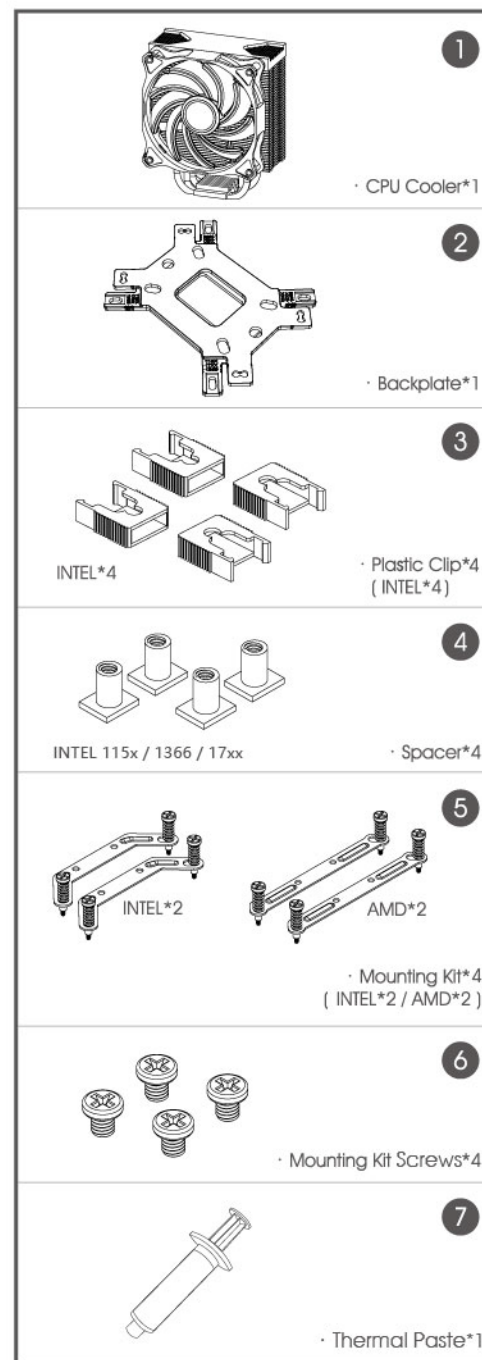
· In case that the "CPU FAN ERROR" message is displayed by the UEFI (BIOS), please adjust the UEFI fan speed settings ("CPU Fan Speed Low Limit" - Option).

※Settings will vary according to your type of motherboard. Please consult your motherboard instructions.

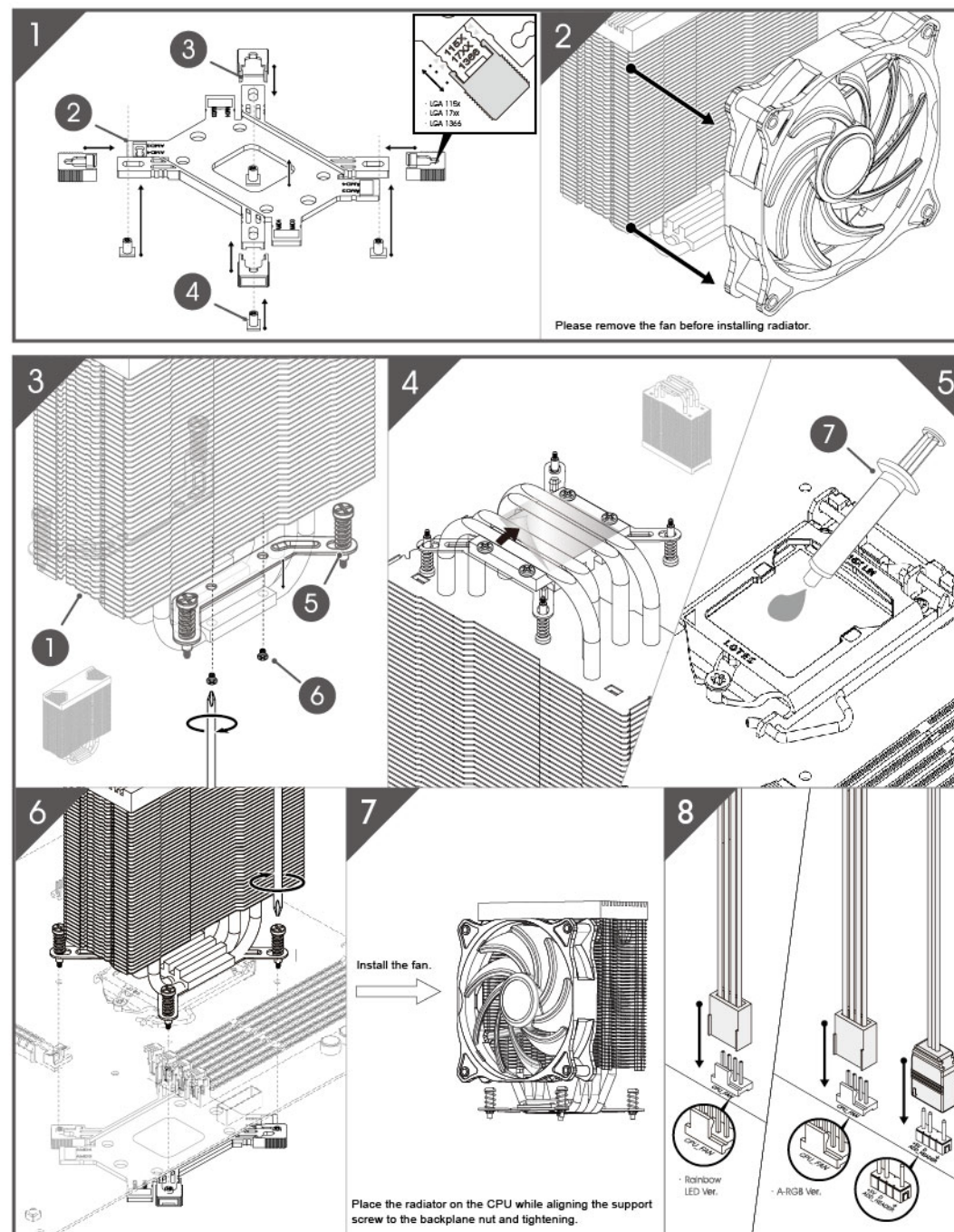
Before Installation & Caution during Installation

- It is recommended to reserve enough space for installing this product as well as to wear gloves to prevent any injuries during the installation.
- Please keep this product and accessories away from children.
- To prevent injuries, please be careful as the edges of the devices installed in your system can be sharp.

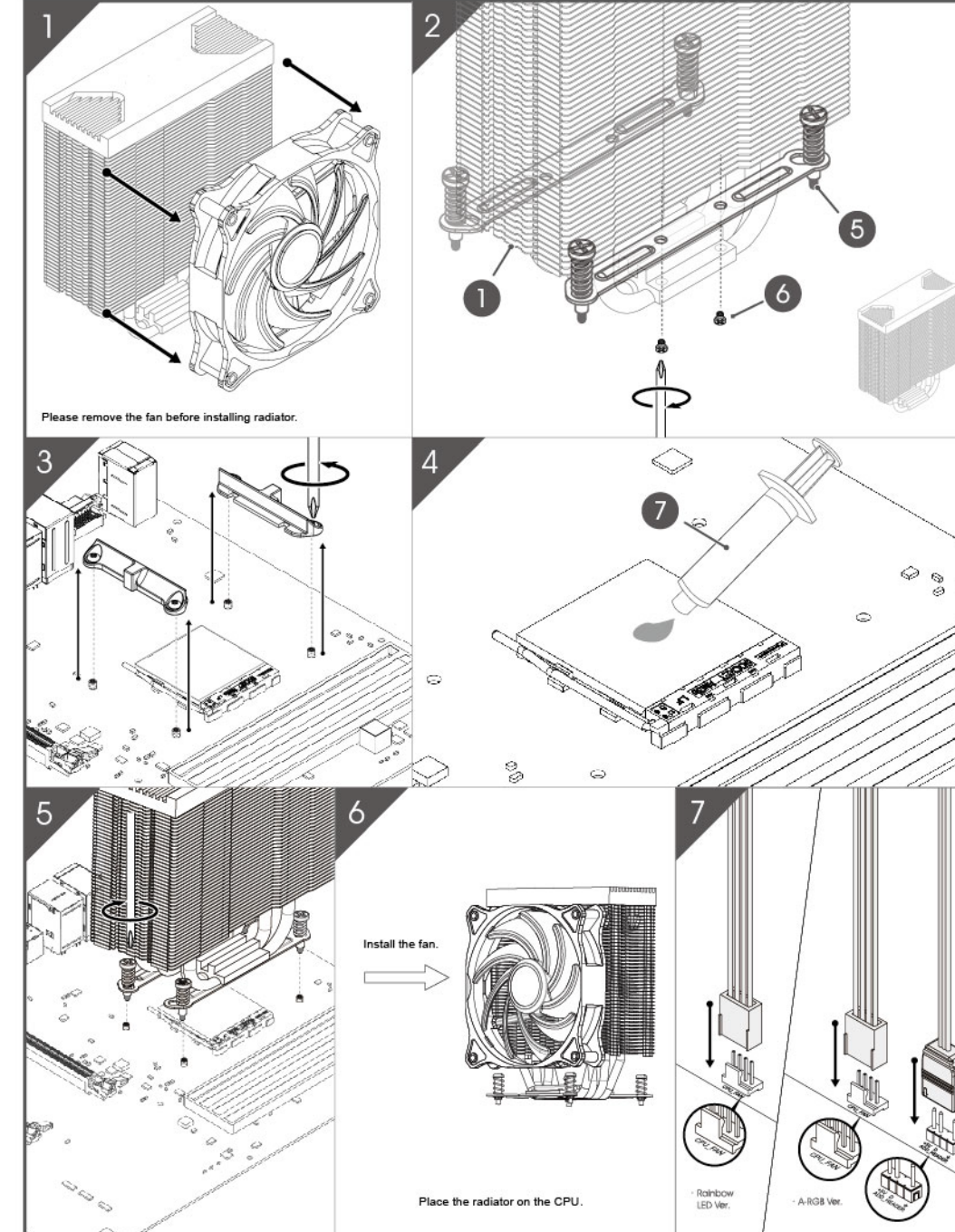
PART LIST



INTEL LGA 115x / 1366 / 17xx



AMD AM4/ AM3(+)/ AM2(+)



www.darkflash.com

Fly to unlimited!